



# National Council of Women New South Wales Newsletter May 2009



No 219

## PATRON

Her Excellency Professor Marie  
Bashir AC CVO

NCW NSW Inc. is affiliated with the  
National Council of Women  
Australia Inc., and the  
International Council of Women

## CONTACT DETAILS

Letterbox 3  
Basement Level  
280 Pitt Street  
SYDNEY  
NSW 2000

Tel: (02) 9269 0433

Fax: (02) 9269 0466

Email: ncwnsw1@bigpond.com

### Inside this issue:

Jean Arnot Luncheon	2
Alcohol Abuse Sexualisation of children Wesley Mission Report Red meat and health	3
NCWA Conference information	4
Happenings- past and future	5
Environment Health and Well Being Sydney's Homeless	6
Women and Work Entertainment Books on offer Love in the Age of Drought	7
Foundation Day Luncheon Booking Form	8
NCW NSW DETAILS DIARY DATES	9-10 11
Dr Lyn Peacock EDITOR drlynp@ozemail.com.au	

## PRESIDENT'S MESSAGE

Greetings to all members of National Council.

It seems no time at all since last I wrote to you, and yet already we are almost at the end of the first half of the year. So much has happened to date, including our President's Lunch where Dr Meredith Burgmann was our guest speaker, on the theme of "Women in Parliament". This function is rather less formal than our other lunches, and is always most enjoyable.

The Jean Arnot Memorial Lunch was celebrated on May 8th. Once again there was a great representation of women in their 90th year and over. The nonogenarians were presented to our Guest of Honour, Lady Martin, and we were also honoured to welcome Noeline Brown, Ambassador for Ageing, as our distinguished speaker. Her address was much appreciated, and produced many laughs.

In addition to the above functions I have been invited as President to represent you at various meetings. Our opinion and input is sought on various aspects of government policy, and these meetings are also an opportunity to disseminate information of importance to our constituent members.

In March of this year the UN Commission on the Status of Women met in New York. The main theme of the meeting was "Equal Sharing of Responsibilities Between Women and Men, including care-giving in the context of HIV/AIDS". The review theme was "Equal participation of women and men in decision making processes on all levels". Of great importance is the emerging issue: "Gender perspectives of the financial crisis". Next year will see the fifteenth anniversary of the historic meeting in Beijing, where the Platform for Action was formulated. No doubt there will be a great deal of discussion around this important date – how far matters have improved for women and whether governments have faced up to their responsibilities under the treaty obligations, to name but a few. We will look to our Advisers to keep us informed of current trends, and ways in which NCW can contribute to sustainable improvement for women and family.

I am pleased to announce that Jacqueline Naher, a new individual member, has accepted the position of Adviser, Women and Employment, replacing Michelle Pedersen, who is undertaking further study and is unable to continue in this role. The Executive Committee has appointed Pamela Coull to the position of Acting Treasurer. Ann East remains on sick leave and we wish her a speedy recovery. I look forward to working with these new office bearers and wish them well in their positions.

As I sit at my desk I can see the leaves of my beautiful liquid amber tree turning russet and gold, and am reminded that we are very much at the "falling of the year". For most of us this means afternoons getting shorter and certainly colder, and the feeling of going home to a warm house and attractive evening meal. But for far too many people this is only a dream. In particular homeless children are presenting in ever increasing numbers. One of our resolutions to the Triennial Conference addresses this subject. Our other Resolution has to do with alcohol advertising, in line with our main focus for the year. I take this opportunity to invite as many of you as can make it to attend this conference, which this year will be held in Adelaide. Details are published in this Newsletter, and may also be accessed through our office. If you are able to attend, please inform us so we can organize our delegation.

Doreen Todd

## JEAN ARNOT MEMORIAL LUNCHEON

On Friday 8th May at Parliament House Sydney, the 17th Jean Arnot Memorial Luncheon, co-organised by NCW NSW and AFBPW NSW, was again another happy and successful occasion. This year we were able to honour 45 Ladies over 90 who have made valuable contributions to their communities through a variety of commitments. It is always a pleasure to meet with these special ladies and to learn about their very active lives.

It was a privilege to have Lady Martin, the widow of the former Governor of New South Wales, Sir David Martin, as our Guest of Honour. Lady Martin met with the ladies in the Jubilee Room prior to the Luncheon and presented them with their Certificates of Recognition. Our Guest Speaker was Noeline Brown who entertained the crowd of 268 with her witticisms and interesting tales of her life on stage as well as her travels around Australia as the Federal Government's Ambassador for Ageing. Noeline also provided us with many interesting statistics on the ageing population of Australia.

Mr Richard Neville, The Mitchell Librarian, announced the winner of the 2009 Jean Arnot Fellowship - Ms Kathryn Greenhill, Emerging Technologies Specialist from Murdoch University, Western Australia. Ms Greenhill had just returned from a research trip to USA and was unable to come to Sydney for the presentation.

Again we involved four of our ladies in the program. Grace was led by Mrs Kathleen Lackey, the Loyal Toast by Mrs Dora Lenane, and Mrs Dorothy Sullivan cut the cake on behalf of all the over 90s. We had a wonderful response to Lady Martin's toast to the Ladies over 90 by Mrs Ruth Hutchins. Ruth, a very young 93 year old spoke, without notes, on her childhood and teenage years living in Manly. I am sure Ruth could have spoken for another fifteen minutes had we allocated the time! For musical entertainment Anna McDonald sang "Summertime" from Porgy and Bess and led the National Anthem as well as playing the piano prior to and after the Luncheon.

We are, as ever, most grateful to our many supporters. The State Library printed the Booklet and the Certificates through Richard Neville, Mitchell Librarian; Nola Barkl who oversaw the preparation of the Dining Room with the help of Liz and Anna McDonald, Sally Fennell, Liz Carpenter; Dr Lyn Peacock copied the Menu/Programs and organised the Foyer Reception; Del Anderson made up the floral sprays; Wesley and Sari Browne again gave chocolates for the over 90s; John Elliston helped in many ways in the preparing of the booklet and preparing the Menu/Program for printing; Jenny Bennett and Margaret Williams did the calligraphy on the Certificates; BPW Central Coast looked after the raffle; Hon Penelope Sharpe MLC. our Parliamentary Host; Marlene Ardito as co-convenor and Treasurer; Mika Magee from Lindt Chocolates for the donation of chocolates for our coffee and last, but not least, Cassandra Allan who took all the photographs which serve as a lasting memory of the day for our Ladies and our records. The photographic record will be kept at NCW rooms for the rest of the year. They will then be sent to The State Library Archives to be kept as a permanent record along with all the other 16 years of records of the Jean Arnot Memorial Luncheons. The Album will be available for viewing at Council Meetings. **Joan Elliston AM**



**ABOVE: Lady Martin, Joan Elliston AM, Noeline Brown and NCW NSW President Doreen Todd in the Jubilee Room before the Luncheon.**



**ABOVE: Lady Martin with Mrs Sheila Ashby, an Awardee at the Luncheon. Just 90 this year, Sheila was born at Watson's Bay, married and moved to Toongabbie. She sewed for Life Line Parramatta for ten years, was a founding member of the Care Group of the Parish of St Anthony's, Toongabbie and was "Grandma" to the Antioch group at St Anthony's for seven years.**



**ABOVE: Noeline Brown, Ambassador for Ageing, delivers her address at the Jean Arnot Memorial Luncheon.**

## Alcohol Abuse—our focus for 2009

Continuing with our major focus for the year, NCW NSW has submitted a Resolution for consideration for the Triennial Conference calling for warnings about the dangers of over-consumption on all advertising of alcohol. The National Health and Medical Research Council has recently released guidelines to reduce health risks associated with alcohol consumption and "Reduce Drinking for Your Health's Sake" has been suggested in WCTU *White Ribbon Signal* (May– June 2009) as a suitable tag. This publication also notes that six sporting codes have signed up for the National Alcohol Code of Conduct.

While the Government continues to promote its tax on alcohols, recent research suggests that the problem is distributed widely across all ages. The AIHS 2007 *National Drug Strategy Household Survey* found that, among those who drink alcohol, daily drinking increases with age. While 19.4% of 14-39 year olds drank at high risk levels of short term harm at least monthly, 15.6% of those aged over 60 drink alcohol daily compared to only 2.9% of the 14-39 year old group.

Other research suggests that 16% of women aged between 35 and 60 are drinking at high risk levels. This may be partially explained by the demands of women undertaking paid work roles as well as traditional roles, making their lives complicated and hectic, encouraging the use of alcohol as a self-reward and as a sedative. Withnall, Hill and Bourgeois from UWS are continuing their study "Researching With Midlife Women in Recovery from Alcohol Dependence" in 2009. Their participants have pointed out the lack of expert understanding of the realities of their everyday lives and the challenges associated with the accepted place of alcohol in Australian culture. Indeed, most of the resources available to assist those with drug-related problems are unsuitable for seniors.  
(Of Substance, April 2009)

Our media adviser, Dr Carolyn Currie has expressed concern about the late night trading of venues selling alcohol. From **Clover Moore's eNews**, (15 May 2009), we learn that two recent reports are on public exhibition—"The Late Night Trading: Community Perceptions Study" surveyed inner city residents to ascertain the impact of late night premises on lifestyles whilst the other study focused on alcohol-related crime. This study found that alcohol-related crime increased with longer hours of operation, the size of the outlets, greater density of outlets and poorly managed venues. Reports are available at [www.cityofsydney.nsw.gov.au/Council/MeetingsAndCommittees/2009/Committees/040509/planning.asp](http://www.cityofsydney.nsw.gov.au/Council/MeetingsAndCommittees/2009/Committees/040509/planning.asp)

The closing date for responses to this public exhibition, which will be used by Council to further develop policy, is 31 July 2009.

**The Royal College of Physicians** made the following points in the *Medical Journal of Australia* (Skov, Mar 09):

- \* Alcohol harm is at an unacceptable level, especially among young people;
- \* A WHO committee advises that increased alcohol prices reduce the proportion of young people who are heavy drinkers, reduce underage drinking and delay intentions by teenagers to start drinking;
- \* NT evidence exists of the effectiveness of public health-focused alcohol taxes.

At the end of April, **DIRECTIONS ACT** launched its *Party Safe* program aimed at giving young people in Canberra new skills to help decrease the risks of binge drinking, drink spiking, unsafe sex and unintended pregnancy, violence and assault, driving-under-the-influence and car accidents. These skills will be imparted as part of a Senior First Aid Certificate. Funding has been provided as part of the Federal Government's National Binge Drinking Strategy.

## CHOICES FOR CHILDREN COMMITTEE— ACTION TO DECOMMERCIALISE CHILDHOOD

The Bankstown Women's Health Centre is establishing a committee to lobby against the premature sexualisation of boys and girls in society. A meeting will be held on 4 June 12.30-2.30pm at the Centre at which input will be encouraged from members of the community. Inappropriate messages reach young people through the media, marketing and the celebrity culture.

The NSW Government released an education Fact Sheet this month titled *Safe Sexting: No Such Thing*. It is designed to discourage the practice of sending suggestive or sexual images through mobile phones that can then be posted on the Internet or forwarded to other people.

## FINANCIAL STRESS: THE HIDDEN HUMAN COST The Wesley Mission 2009

This report shows a doubling since 2006 in the number of people whose credit has run dry and that financial stress is destructive to health and family relationships. Mortgage holders and those living in private rental accommodation were surveyed. Single parents experienced higher distress. Most people did not draw up budgets or adhere to them and increasingly were unable to pay credit card and utilities debts.

The Mission calls for urgent action in the following areas:

- Provision and promotion of financial literacy;
- Regulation of the financial sector;
- More funding for financial counseling; and
- Affordable housing.

The full report can be downloaded from [www.wesleymission.org.au](http://www.wesleymission.org.au). This website also provides a proforma for budget planning and an opportunity for everyone to join their petition for action.

A link has been found between eating too much red meat and vision loss. Researchers from the Royal Victorian Eye and Ear Hospital and the Centre for Eye Research Australia (CERA) have found an association between red meat consumption and an increased risk of early age-related macular degeneration (AMD). The study examined the diets of 6734 people across Melbourne aged between 58 and 69 years. Report author Elaine Chong said there was an association between people who ate red meat more than 10 times a week and early AMD. "Interestingly, about one quarter of our study population ate red meat at least 10 times a week; and the association with both early and late AMD was stronger for salami and continental sausage consumption than for fresh red meat."



NATIONAL COUNCIL OF WOMEN OF AUSTRALIA INC LTD

TRIENNIAL CONFERENCE  
24-27 SEPTEMBER 2009

THE HAWKE CENTRE UNISA  
5060 NORTH TERRACE ADELAIDE

THEME: WOMEN & ENVIRONMENT

<b>NAME</b>			<b>PHONE</b>
<b>ADDRESS</b>			<b>EMAIL</b>
<b>Are you a DELEGATE / COORDINATOR / ADVISER?</b> (Please circle where applicable)		<b>WHICH STATE?</b>	
<b>FULL REGISTRATION:(EARLY BIRD PAY BY 30 APRIL 2009)</b> Includes all papers, lunch, morning and afternoon teas for three days, Civic Receptions on Thursday 24 & Friday 25 September, and \$5 donation to the Margaret Davey Trust Travel Fund. This was established in order to assist NCWA members to attend conferences.		\$245.00	Indicate Number \$
STANDARD RATE (pay after 30 April 2009)		\$245.00	
<b>DAY REGISTRATION:</b> Includes all papers, lunch, morning and afternoon tea and Civic Receptions and \$5 donation to the Margaret Davey Trust Travel Fund. This was established in order to assist NCWA members to attend conferences.			
ONE DAY ONLY Friday! Saturday / Sunday (Please circle which day attending)		\$135.00	
<b>NCWASA PATRON'S RECEPTION GOVERNMENT HOUSE</b> Thursday 24 September 2009 5.30— 6.30 pm		Included in Registration	\$0
<b>LORD MAYOR'S RECEPTION TOWN HALL</b> Friday 25 September 2009 6—7 pm		Included in Registration	\$0
ADDITIONAL GUESTS		No charge	\$0
<b>CONFERENCE DINNER: NAVAL,MILITARY &amp; AIR FORCE CLUB</b> 111 Hutt Street Adelaide Saturday 26 September 2009 6.30 for 7 pm GUEST SPEAKERS:Prof Marian Quartly & Assoc Prof Judith Smart ENTERTAINMENT: TBA			
CONFERENCE ATTENDEES (2 COURSES ÷ glass of wine) Pre-dinner drinks and other at bar prices		\$75.00	
GUESTS  Please list names of guests on reverse of this form		\$90.00	
<b>SPECIAL DIETARY REQUIREMENTS:</b>			
<b>TOTAL</b> Please mail registration form and cheque to: NCWA 34 Cambridge Tce. Malvern SA 5061			
<b>TO SAVE THE ENVIRONMENT PLEASE BRING YOUR OWN CONFERENCE BAG &amp; NAME TAG!</b>			

**Accommodation suggestions close to Conference Venue**

Hotel Holiday Inn, 65 Hindley Street, Adelaide PH 08 8237 38 [www.holidayinn.com.au](http://www.holidayinn.com.au)

Hotel Comfort Inn, Adelaide Riviera, 31-43 North Terrace, Adelaide [www.adelaidriviera.com.au/](http://www.adelaidriviera.com.au/)

Apartments Rockford Hotels, 164 Hindley Street, Adelaide PH 08 8211 8255 [www.rockfordhotels.com.au](http://www.rockfordhotels.com.au)

# HAPPENINGS

## COUNCIL SPEAKERS

Following an address by Ann Hannema on Zonta International, the April meeting devoted members' attention to the Resolutions to be put forward to the Triennial Conference.

The May meeting will be addressed by Human Rights Lawyer, Frances Simmons, who has assisted in drafting the NGO guidelines for Working with Trafficked People.

In June, Helen Connealy will speak on Schizophrenia.

## ORGANISATION PROFILE: ZONTA INTERNATIONAL

Founded in 1919, Zonta members work to advance the status of women worldwide through service and advocacy. The Zonta Club of Sydney East has been operating since 1979.

Members meet monthly, hear interesting speakers, and organize fund-raising activities such as dinners, musical days, theatre parties etc. Making and distributing breast care cushions and packing birthing kits for women in developing countries are ongoing activities.

Girls and young women are supported by scholarships and awards, including a scholarship at the NCW "Celebrate Being an Australian" Luncheon in January.

## INDIVIDUAL MEMBERS' MORNING TEA

at  
Eat on Piccadilly, Level 1,  
Piccadilly Arcade, Pitt Street  
from 10.30-11.30am.

Next meeting Wed 17th June 2009



## MONASH COMMEMORATIVE SERVICE

On 12th May, I was privileged, along with President Doreen and other NCW members, to attend this service organized by The Spirit of Australia Foundation in Shore Auditorium.

General Sir John Monash GCMG KCB VD became General Officer Commanding Australian Army Corps in France 1918 and followed his outstanding military achievements by establishing the State Electricity Commission of Victoria, using his engineering and legal qualifications.

His recommendation was to "adopt as your fundamental creed that you will equip yourself for life, not solely for your own benefit, but for the benefit of the whole community". (Editor)

## FOUNDATION DAY LUNCHEON

Celebrating 113 years of service, this event will be held on Friday 5 August at Parliament house. Our guest speaker will be FIONA HIGGINS, author of *Love in the Age of Drought*. NCW members will recall Fiona as Fiona Collins, an Australia Day Awardee in 1996.

At this function, NCW NSW recognizes women nominated for their tireless work in their communities. One will receive the NCW NSW Award. See enclosed Nomination Form and Notice of Luncheon.

## 27th National Christian Family Conference, July 27-28, 2009

*"The Strength to Succeed: Qualities that Build Strong Families"*



Speakers include Drs Nick and Nancy Stinnet from University of Alabama

Venue: Conference Room, Sydney Adventist Hospital, Wahroonga.

\$180 for 2 days with midday meals,; \$100 for 1 day.  
Ph 9847 3306 to book.

## 2009 TRIENNIAL CONFERENCE ADELAIDE 24<sup>th</sup> to 27<sup>th</sup> September



## "WOMEN AND ENVIRONMENT"

Whilst early bird registrations have closed, it is not too late to book.  
Registration details are on page 3.

NOTE: Any 10 NSW delegates to Conference can form the NSW voting body- you do not need to be a member of the NSW Executive to attend and form part of the voting delegates.



Women's Plans Foundation is delighted that Her Excellency, Ms Quentin Bryce AC, Governor-General of Australia has consented to be patron of this organisation.

Funds will be raised in 2009 through a Morning Tea at The Women's Club on 24 June where Susannah Fullerton will speak on Samuel Pepys' Diary and at the Annual Cocktail Party and Auction to be held on 21 October at Lindesay, Darling Point.  
Bookings and further details from Alice Oppen - 9817 5175 or email [oppenama@bigpond.com](mailto:oppenama@bigpond.com).

Funds have recently been provided to the Midwives on Bikes project in Timor-Leste, to ChildFund Australia in Vietnam for training in family planning, and to the Solomon Islands for radio spots promoting sexual health to young people.

The organization continues to ask women to reflect the Vatican's continuing opposition to condoms in third world cultures.

Visit the website at [www.womensplans.org](http://www.womensplans.org) for more details.

## ENVIRONMENT

The push for “greener” fuels has meant an increase in the production of crops for biofuels, leaving some people in poverty and without adequate foodstuffs. The UN Special Rapporteur on the Right to Food has declared biofuel a “crime against humanity”; Oxfam calls it “another “inconvenient truth”.

The UN Committee on Economic, Social and Cultural Rights defines the right to food as : “the right of every man, woman and child alone and in community with others to have physical and economic access at all times to adequate food or means for its procurement in ways consistent with human dignity.”

The right to food means that Governments must not take actions that result in increasing levels of hunger, food insecurity and malnutrition. Governments must also protect people from the actions of others that might violate the right to food. The right to food is a human right and is a binding obligation well-established under international law, recognised in the [Universal Declaration on Human Rights](#) and the [International Covenant on Economic, Social and Cultural Rights](#). In recent weeks, South Australia has banned the use of plastic shopping bags and Target has joined the bandwagon declaring they will no longer supply plastic carry bags, but rather they will sell degradable shopping bags or reuseable bags. However, some of these bags are made of corn starch, as is some of the foam-style packaging and beads that now hold a variety of household goods firmly in their box for transport.

Biodegradable starch-based polymers are based on crops such as corn, wheat and potatoes. Starch content of the product needs to be at 60% or higher for breakdown to occur. In thermoplastic starch products, starch is plasticized and blended with other materials to create the necessary properties. As starch attracts and holds water, the plastics disintegrate readily on contact with water. Starch polymers are being used in shopping bags, bread bags and mulch film. Foamed starch loose fill is being used in packaging and injected moulded take-away containers.

Will these products become another diversion of food stuff to appease the green movement?

## HEALTH AND WELLBEING

One Resolution to be presented for the Triennial Conference relates to the current inequities in salaries of nurses in aged care as opposed to those in other areas of practice. In April 2009, the Australian Nurses Federation Press Release noted the Senate Report into community and aged care. Ged Kearney, ANF Federal Secretary said that more nursing staff were desperately needed, as was the right mix of worker skills across the aged care sector. As residents in nursing homes require complex nursing care for high levels of health needs, having the right mix of registered and enrolled nurses and carers is essential to ensure that all needs are met. Ms Kearney emphasized that the sector must be able to pay competitive wages and ensure the resources are available to ensure the best care.

The ANF called on the Australian government to develop a benchmark staffing guide to establish minimum staffing and skill levels. “This could easily be developed based on resident care needs using data already collected by ACFI (Aged Care Funding Instrument)” Ms Kearney said.

The ANF has launched the **Because We Care** campaign – quality care for older Australians - calling for openness and accountability in the way taxpayer funds are spent, fair pay for nurses and care staff in aged care who are now paid up to \$300 a week less than nurses in other sectors, the right balance of skills and working hours so that nurses and care staff can provide quality care, and recognition of the professional skills of assistants in nursing and care staff through a national licensing system.



### Year of the Blood Donor 2009

An anticipated doubling of demand for blood and blood products within 10 years has led the Australian Red Cross Blood Service to launch a nationwide recruitment drive in 2009, Australia’s Year of the Blood Donor. The Blood Service is appealing for more than 100,000 new blood donors this year, in addition to the 40,000 who registered across Australia to give blood in the week after the Victorian bushfires.

## ECONOMICS

### SYDNEY’S HOMELESS

The Sydney City Council is leading the way in tackling homelessness. The Inner City Homelessness Outreach and Support Service is jointly funded by Housing NSW and the City and seeks to get rough sleepers into housing and provide help with living skills for twelve months until a person’s tenancy is stable. The Premier’s Homeless Intervention Team is currently unable to cope with demand.

The Rudd government’s White Paper on Homelessness, *The Road Home*, was released in December. The targets set include halving overall homelessness by 2020 and offering supported accommodation to all people in need by 2020. The strategies proposed include stemming the increase in homelessness, especially for those with mental health needs; making services more connected and responsive; and breaking the cycle by moving people more quickly through crisis housing to stable housing. The Commonwealth is promising to build 50,000 affordable rental homes for low and moderate income earners, 2,700 homes for people who are at risk of homelessness, and about 9,000 homes in Indigenous communities.

In February 2009, the Commonwealth announced the provision of additional funding for social housing under the Nation Building - Economic Stimulus Plan. This initiative will provide funding of \$6 billion over three and a half years from 2008-09 to 2011-12 for the construction of new social housing and a further \$400 million over two years for repairs and maintenance to existing public housing dwellings. It is being conducted in partnership with the state and territory governments. It will provide a boost to public housing and housing administered by the not-for-profit community sector and is designed to assist low income Australians who are homeless or struggling in the private rental market.

## WOMEN AND WORK

The Australian Government will introduce a comprehensive Paid Parental Leave (PPL) scheme for new parents who are the primary carers of a child born or adopted on or after 1 January 2011.

An eligible person will receive taxable PPL payments at the level of the Federal Minimum Wage, currently \$543.78 a week, for a maximum period of 18 weeks. In most cases, the person will receive the payment through their employer.

To be eligible for the PPL scheme, the primary carer (usually the mother) must be in paid work and have:

- been engaged in work continuously for at least 10 of the 13 months prior to the expected birth or adoption of the child; and
- undertaken at least 330 hours of paid work in the 10 month period (an average of around one day of paid work a week).

An income test of \$150,000 will apply based on the primary carer's adjusted taxable income in the previous financial year.

PPL will cover employees, including casual workers, as well as contractors and the self-employed. If a primary carer returns to work before they have received all of their PPL entitlement, they may be able to transfer the unused part of their PPL to another caregiver (usually the father) who meets eligibility requirements.

Eligible families can choose whether to participate in the scheme depending on their individual circumstances. Families electing to participate in the scheme will not receive the Baby Bonus (except in multiple birth cases) or Family Tax Benefit Part B during the 18 week PPL period. The dependent spouse, child housekeeper and housekeeper tax offsets also will not be available during this period.

[www.faHCSIA.gov.au](http://www.faHCSIA.gov.au)

A sincere apology to Mrs Alice Arnott Oppen for wrongly attributing a January Scholarship to Family Planning NSW instead of to Women's Plans Foundation in the March News.  
Editor.

## The 2009 / 2010 Entertainment™ Books



Once again, NCW NSW is offering members the chance to purchase these books for **\$65**. Your purchase helps NCW NSW fundraising.

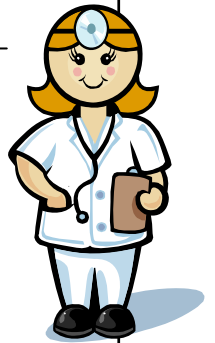
Containing over \$15,000 of valuable offers including new dining offers—discounts of as much as \$40 off 2 meals, (excellent when entertaining guests), IMAX Cinema entry, discounts on services such as dry cleaning, hotel offers (a couple of us have saved significantly more than the cost of the Book by using it for accommodation in Adelaide for the Triennial Conference). The offers last from June 1– May 31 2010.

This book makes an excellent birthday gift for that “hard to buy for” friend. Check out more details at [www.entertainment.com.au](http://www.entertainment.com.au).

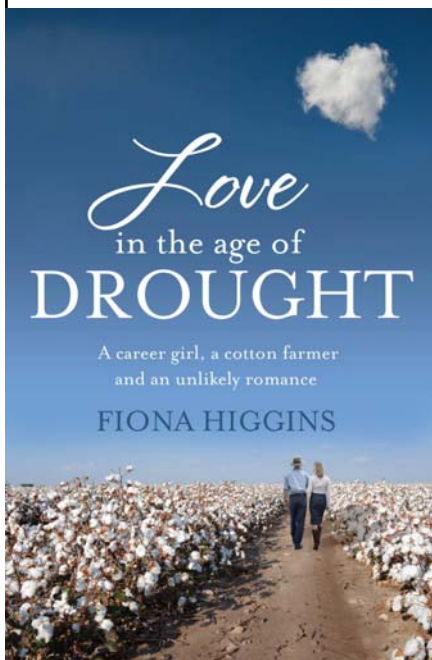
Contact the NCW Office with your order and Nola will give you information about pick-up etc.

## FEMALE MEDICAL STUDENTS DOMINATE COURSES

Women medical students now outnumber males at the Australian National University in Canberra, increasing the chances of getting more women doctors in the bush. The ratio is 70 per cent female to 30 per cent male at the ANU's post-graduate medical course that specialises in rural and remote medicine.



ABC Rural News, 11 May 2009.



Published by Macmillan  
Australia  
April 2009 \*\*\* \$34.99RRP

**Fiona Higgins (Collins) is a previous NCW Award winner and won admiration for her journey cycling around Australia in 1999 to raise funds for the OzIndo Project, a relief fund for Indonesians in critical need of staple foods. Fiona will be the Guest Speaker at our Foundation Day Luncheon in August.**

When Fiona Collins meets Stuart Higgins at a leadership conference in Melbourne, she isn't looking for a relationship, let alone the upheaval of falling in love with an intelligent, eco-friendly cotton farmer from south-east Queensland, but then life never quite turns out the way we plan...

When Stuart sends Fiona a pair of crusty old farm boots and a declaration of love 16 days into their fledgling relationship, it's the start of a love story that endures – in spite of distance, the strain of Stuart's cotton farm entering its fourth year of drought, and Fiona's issues with commitment.

Something's got to give, and Fiona eventually makes the move from Sydney's Manly to Stuart's farm where the nearest township is Jandowae, population 700.

Fiona is transported into an Australia entirely different from her urban existence and, despite the all-too-real sense of being an outsider she flings herself headfirst into the fabric of rural life and discovers the boundless beauty of country living and the people that form the community around her.

Growing to love her new life on the land, Fiona becomes adept at scone-making, even beating the local champion at the Jandowae & District Show. She conquers her fear of slithering snakes and frogs in the toilet, and knows she has finally become a local when she joins the collective bush telegraph... instead of being the subject of it.

But, as Stuart struggles to balance environmental and commercial realities of farming in drought-stricken land, she realises that it isn't as simple as she first imagined. Fiona has to learn how to cope with the devastating impact of the drought that grips the countryside, and what it means for Stuart, the farm and their future together.



# Foundation Day Luncheon

## Advance Notice

**Wednesday 5 August 2009**  
**12 for 12.30pm**

Strangers' Dining Room

Parliament House

**GUEST SPEAKER:**  
**FIONA HIGGINS**  
Author of  
*Love in the Age of Drought*

For further details phone:  
**9269 0433**

---

Please complete the booking form below and return by  
Thursday, July 30 to:  
National Council of Women NSW,  
Basement Level, (Letterbox # 3)

Please reserve \_\_\_\_\_ places for the Foundation Day Luncheon 2009

I enclose a cheque for \_\_\_\_\_

Contact Person \_\_\_\_\_ Phone Number \_\_\_\_\_

Names of attendees covered by this cheque: (PLEASE PRINT CLEARLY)

- |          |           |
|----------|-----------|
| 1. _____ | 2. _____  |
| 3. _____ | 4. _____  |
| 5. _____ | 6. _____  |
| 7. _____ | 8. _____  |
| 9. _____ | 10. _____ |

# **THE NCW NSW AWARD WILL BE PRESENTED AT THE FOUNDATION DAY LUNCHEON**

## **WHO CAN BE NOMINATED?**

The nominee should be a person who has worked to advance the status of women and who has not previously received official recognition. Her work would most likely be marked by dedication and/or persistence.

## **WHO CAN BE A NOMINATOR?**

Any person who is a member of an Affiliated Organisation of NCW or an Individual Member may submit a nomination. The nominee does not herself have to be a member of NCW.

## **HOW TO PREPARE A NOMINATION?**

Submit a written statement (simple point form is acceptable) explaining:

How the nominee's efforts have advanced the status of women

What achievements were gained

Methods and/or activities used in the process of obtaining results

The nominee's assistance may be sought in compiling the statement and it is expected that the above information will cover details of, for example:-

Membership of professional bodies

Positions held

Civic and social memberships

Publications/Compositions/Exhibitions

Awards and prizes

Other interests and activities

## **HOW TO PRESENT YOUR NOMINATION?**

Complete the NOMINATION FORM. It should then be used as a front cover for the written statement supporting the nomination which is to be forwarded to NCW NSW (details on Nomination Form).

## **ASSESSMENT OF ENTRIES**

The judging panel will consist of members of the Awards Committee together with a member of the community who is an acknowledged leader in her field. The assessment will be made entirely on the supporting statement accompanying the nomination.

**NOMINATION FORM**  
**NATIONAL COUNCIL OF WOMEN NSW INC.**  
**NCW NSW AWARD 2009**

Please note: Closing date for receipt of Nominations, Monday 20 July, 2009

Date of Submission .....

**DETAILS OF NOMINEE**

.....  
FULL NAME *(please print)*

TITLE *(Ms, Miss, Mrs, Dr)*

.....  
ADDRESS *(please print)*

PHONE: .....FAX: .....

.....  
*Signature of Nominee*

**DETAILS OF NOMINATOR who should be a Member of an NCW Affiliated Organisation or an Individual Member**

.....  
FULL NAME *(please print)*

TITLE *(please print)*

.....  
ADDRESS *(please print)*

PHONE: .....FAX: .....

.....  
*Signature of Nominator*

Return to:      **The Convener, NCW Award 2009,  
Basement Level (Letterbox #3)  
280 Pitt Street, SYDNEY NSW 2000**

Receipt of submissions will be acknowledged. All Nominees will receive a Certificate of Nomination at the Foundation Day Luncheon when the winner of the Award will be announced.

*The NCW Award applauds the winner's dedicated commitment to  
improving the quality of life for women and their families.*

**PLEASE CONSIDER SUBMITTING A NOMINATION FOR  
THE NCW NSW AWARD**



**National Council of Women  
New South Wales**

**Basement Level (Letterbox #3)  
280 Pitt Street  
SYDNEY 2000  
Ph: 9269 0433 Fax 9269 0466  
Email: ncwnsw1@bigpond.com**

## **DATES FOR YOUR DIARY**

<b>Thursday 28 May</b>	<b>Council Meeting, Level 3, SMSA, 280 Pitt St. 6-8pm. Guest Speaker: Frances Simmons, Anti-slavery project .</b>
<b>Wednesday 17 June</b>	<b>Individual Members' Morning Tea—see page 5.</b>
<b>Wednesday 17 June</b>	<b>Executive Meeting, Basement Office, 280 Pitt Street. 12-2pm.</b>
<b>Thursday 26 June</b>	<b>Council Meeting, Level 3, SMSA, 280 Pitt St. 6-8pm. Guest Speaker: Helen Connealy, Schizophrenia</b>
<b>Wednesday 15 July</b>	<b>Executive Meeting, Basement Office, 280 Pitt Street. 12-2pm.</b>
<b>Thursday 30 July</b>	<b>Council Meeting, Level 3, SMSA, 280 Pitt St. 6-8pm. Guest Speaker: (TBC) Nicki Newton, Alcohol Education Program</b>
<b>Wednesday 5 August</b>	<b>Foundation Day Luncheon, Strangers' Dining Room, Parliament House, 12 for 12.30pm. \$70. Booking Form enclosed in News.</b>
<b>Wednesday 19 August</b>	<b>Executive Meeting, Basement Office, 280 Pitt Street. 12-2pm.</b>
<b>Thursday 26 August</b>	<b>Council Meeting, Level 3, SMSA, 280 Pitt St. 6-8pm. Business of this meeting will be to discuss all the Resolutions to be presented at Triennial Conference.</b>
<b>Wednesday 9 September</b>	<b>Executive Meeting, Basement Office, 280 Pitt Street. 12-2pm.</b>
<b>Thursday 17 September</b>	<b>NCW NSW Annual General Meeting.</b>
<b>24-27 September</b>	<b>NCWA Triennial Conference, Adelaide. Details enclosed.</b>